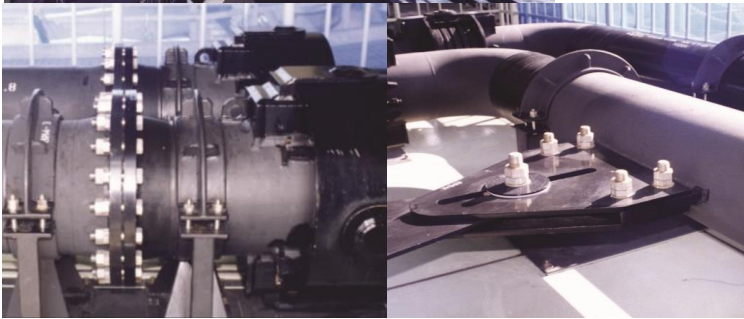




# BRIDGE

## 【MAIN APPLICATION】

- Bridge Ancillary Equipment Joint Portion
- Piping Flange Portion
- Inspection Passage
- Long-span Bridge Illumination Equipment
- Maintenance Vehicle Equipment for Inspection
- Information Board
- Pedestrian Bridge
- Falling Objects Prevention Equipment
- General Road Equipment



Water Supply Plumbing ( Akashi Kaikyo Bridge )



Long-span Bridge Ancillary Equipment Joint



Long-span Bridge Road Equipment