



# PYLONS

## 【MAIN APPLICATIONS】

### ● Communications Tower

Joint  
Ancillary Equipment  
Steel Frame Etc.

### ● Transmission Tower

Pipe Jumper  
Insulators Fastening Etc.



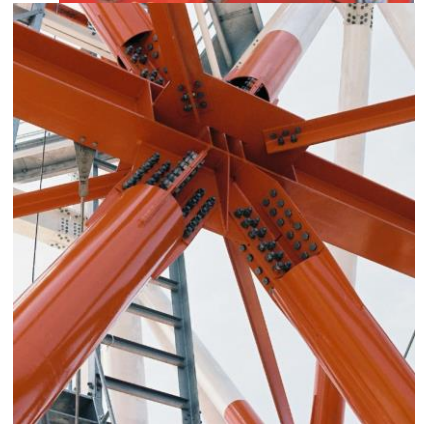
Transmission Tower



Communications Tower



Joint (Angle/Pipe)



Joint (Angle/Pipe)



Transmission Tower Pipe Jumper



Steel Frame for Digital Equipment